

# NEWLIFE

## round up!

YOUR BI-ANNUAL UPDATE FROM  
THE FUNDRAISING TEAM

SPRING | SUMMER 2022



Read about  
Marathon Mum  
Kerry and why  
she is running to  
support Newlife

Inside:

Find out how Elly has  
supported over 30 children  
with her fabulous fundraisers

Be in with a chance of  
winning up to £25k



 **newlife**  
THE CHARITY FOR DISABLED CHILDREN

Newlife the Charity for Disabled Children - Registered Charity Number: 1170125 in England & Wales.

# WELCOME TO YOUR NEWLIFE ROUND UP

Hello and welcome to the Spring/Summer edition of Newlife Round up, our bi-annual fundraising newsletter bringing you our latest news, upcoming events and stories from our fantastic fundraisers.

Inside this edition, you will read about some of our amazing supporters, such as Elly on page 3 who has raised almost £45,000 for Newlife! You'll also read about Harriet and the huge impact being provided with a specialist car seat has made to her and her family. Whether you fancy taking to the skies for our June skydive, running 13.1 miles in the Great North Run or joining our Newlife lottery, we have something for everyone. Every penny you raise goes directly towards supporting disabled and terminally children in need of specialist disability equipment so we hope you will join us in 2022!

If you're interested in keeping up to date with our latest events and updates follow us on social media:



Alternatively, you can call us on 01543 468 888 or email [fundraise@newlifecharity.co.uk](mailto:fundraise@newlifecharity.co.uk) – we would love to hear from you!

Thank you for all your continued support and all that you do for Newlife; we couldn't make a difference to thousands of disabled children's lives without you.



Jo Duggan  
Director of Fundraising



# FABULOUS FUNDRAISER'S £45,000 BOOST FOR NEWLIFE

**A kind hearted Milton Keynes woman has raised almost £45,000 for Newlife over the past seven years – and is urging other people to get involved too!**

Elly Hance began fundraising for Newlife in 2015 after reading a newspaper report about a child that was helped by the charity. Elly's dedication means that more than 30 children have received equipment from Newlife over the past seven years – and she is urging others to help Newlife in any way they can.

Elly said "It's an amazing feeling, being able to help a child in need. That's what drives me on – helping the next child in need receive equipment that can be quite simply life-changing. This could be specialist seating so they can be involved with family activities, a buggy or wheelchair so they can go outside, or a safe bed to sleep in without risk of injury."

"I know that Newlife helps children in a very real way and that every penny donated to them to fund equipment, actually goes to fund equipment."

Elly and her group of friends have held numerous events over the years ranging from sponsored walks and sing-a-thons, to jewellery and card making. Elly also makes crafts to sell, such as pyrography, the art of decorating wood with burn marks.

During the pandemic, Elly made 1,900 face masks which resulted in a whopping donation of £4,782!

Elly added "My children are grown and fine, but for a disabled child the equipment those funds purchase makes such a difference. That's why I urge people to fundraise for Newlife – dip your toe in the water – you've got nothing to lose! Every penny counts!"

If you would like to find out more about how you can get involved and raise funds for Newlife, please call Sally on 01543 468 888 or email [fundraise@newlifecharity.co.uk](mailto:fundraise@newlifecharity.co.uk)



Elly with her husband Ken

Celebrating a birthday or anniversary? Why not create a Facebook fundraiser!

# SPECIAL CAR SEAT MEANS SUMMER FUN FOR HARRIET



**Car journeys with children can be difficult at the best of times, but not having the right car seat to meet her needs meant seven-year-old Harriet Savage would escape the lap belt of her standard car seat and move around the vehicle – creating a dangerous distraction.**

Harriet has autism and development delay which has caused her to have little awareness of danger and is non-verbal, which can cause her to become frustrated. She also has hypermobility, so her joints move far beyond usual limits meaning she can easily slip out of seatbelts, even with an adult in the back of the car with her.



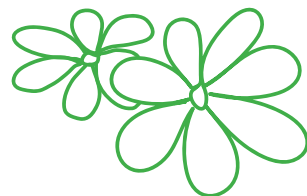
Harriet in her new car seat

Harriet's parents, Jeanette and Alastair, had tried several high street car seat options to keep Harriet safe and secure, but those suitable for her age don't have the type of five point harness she needs to keep her securely in the seat. Without the right car set they felt it wasn't safe to take Harriet out, so they only made the most necessary journeys with her.

Even the school transport Harriet used had become risky as she would get out of her seat during the journey, so when the special school she attends purchased extra equipment to keep her safe, they recommended her parents contact a supplier of a specialist car seats who recommend the best one for her – but as the seat cost almost £900 the family turned to Newlife to help fund it.

Mum Jeanette said "Harriet is a happy and smiley girl, but she is a bit of a Houdini. We got to the stage where we couldn't go out in the car safely as she would get out of her seat and climb into the front of the car or try to get into a foot well.

"Driving when Harriet was doing this was a frightening experience, especially on the motorway when you just can't stop.



"One time we were on the A55 and Harriet was running around the car, it was just so dangerous, but even simple things like going to the shops would make me panic – I just didn't feel like I could take Harriet anywhere safely.

"As she didn't have the right car seat to support her needs we were really struggling to get out and have those family experiences with Harriet which meant both she and her sister, Neve, aged 12, who has Sensory Processing Disorder and Dyspraxia, missed out on going to different places."

**Now, thanks to Newlife, Harriet has a car seat with a five point harness, chest clip and head rest, to keep her snug, safe and secure, which has safely opened up the world again for the whole family to enjoy.**

Mum Jeanette, added "This car seat has made a big difference to our lives. It's really built my confidence up so I feel like I can take them out again.

"Harriet actually likes getting into the car seat now and as it keeps her really secure it gives us the peace of mind we need so we can just get out and about.

"Now we can go on longer journeys together, explore different places and do new things and we have lots of things to look forward to doing together this summer.

"We are just so thankful to Newlife – and to everyone who donated to the charity to help make this happen."

**Find out more about the support we can offer by visiting our website [www.newlifecharity.co.uk](http://www.newlifecharity.co.uk)**

## HOW YOU HELPED US TO MAKE A DIFFERENCE IN 2021

**We helped 1200 children in crisis**

**We spent 1.1million on equipment for children in crisis**

**We helped 313 children with Quality of Life grants**

**We supplied 1,323 Play Therapy Pods to disabled children and their families**

**We supported children in 97 out of 104 counties across the UK**

**Our Nurses Helpline supported almost 4,700 families**



# make a smile today

## WIN<sup>up to</sup> £25,000

make a smile  
lottery



Play **make a smile lottery** to support **Newlife**

Are you keen to make a difference?

Make a smile lottery supports good causes across the UK. By playing the lottery, not only are you helping raise vital funds, you are in with the chance of winning great prizes!

You can sign up to make a smile lottery on a regular basis for as little as **£4.34** a month. We also offer the option to buy single tickets at **£1** per play, if you do not want to commit to playing regularly.

Scan the QR code to find out more or contact our friendly team using the details below!  
**hello@makeasmilelottery.org.uk**  
**0300 303 4500**

[www.makeasmilelottery.org.uk](http://www.makeasmilelottery.org.uk)

### SCAN ME



### to support!

## Play & Save

We offer a **Play & Save Reward Card** to our loyal lottery players as a way to say thank you!

Another great reason to join the lottery!



## TOYOTA CHEQUE FOR NEWLIFE

Newlife were delighted to receive a cheque for £2,000 from the TMUK Charitable Trust. Paul Maplesden, Corporate Fundraiser, attended Toyota in Derbyshire where he was delighted to meet with Richard Kenworthy, Managing Director of Toyota UK:



"We are thrilled to have the support of the TMUK Charitable Trust. This money will be used to support disabled children across Derbyshire and North Wales, locations where Toyota have manufacturing sites."

## TRAILER FREIGHT PARTNERSHIP

We are delighted to announce our partnership with Trailer Freight International Ltd. Based in Walsall with a national reach, Trailer Freight will proudly display the Newlife logo on their trucks, literature and staff uniforms.



L-R: Paul Maplesden, Corporate Fundraiser, David Neill, MD of Trailer Freight, Allan Collins, Trailer Freight and Martin Davis, Newlife

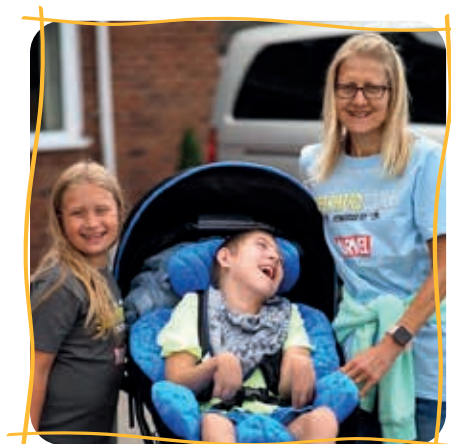
Do you know a company who might like to partner with Newlife?

- Charity of the Year
- Staff Fundraising
- Group Challenge Events
- Matched Funding
- CRM and Affinity Partnerships
- Sponsorship
- Volunteering opportunities

Along the way, you will have fun and make a massive difference to children and families who need our services.

Contact Paul today on 01543 468 888 or email [pmaplesden@newlifecharity.co.uk](mailto:pmaplesden@newlifecharity.co.uk)

# MARATHON MUM'S FUNDRAISING PLEDGE



Adam pictured with Mum Kerry and sister Isla

Kerry Salt knows just how important it is for children to have the right equipment at the right time, as she turned to Newlife three years ago to provide specialist seat for her son, Adam. Now she is lacing up her running shoes and putting her endurance to the test by taking part in her first ever marathon – and raising much needed funds for the charity so more children can receive the vital equipment they need.

Although Kerry has been running for several years to help her own health issues, as she approaches the age of 50 she decided to do something to really challenge herself – and that is to run the Manchester Marathon!

"A full marathon is very different to the half marathons I have ran in the past, it's much more gruelling, but it's also a way for me to say thank you to Newlife for the help we received," Kerry explained.

"Adam has complex needs and requires 24 hour care, so I went from working full time to being on Universal Credit. When you suddenly find yourselves in that situation of needing

the help of a charity to provide the equipment your child needs, finding one like Newlife is a godsend.

"The chair they provided wasn't just life changing for Adam, it was for the rest of the family too."

Adam, now aged 14, was born at 32 weeks and has Cerebral Palsy, which affects all four limbs. As well as development delay he has chronic lung disease and reflux, which can cause him to choke. As he has an unsafe swallow he receives all his nutrition through a tube and needs oxygen and suction machines to help him breathe and prevent him choking and aspirating into his lungs.

The seating Newlife provided is made up of a base with small, easily manoeuvrable wheels and a specially moulded seat which comfortably supports Adam while keeping him at just the right angle so when he has reflux, he doesn't choke. Newlife also paid for a remould of the seat too, so as he grows, he will continue to have a seat that meets his needs, without his family having to worry about new costs.

Kerry added "The wheel base can lower and raise Adam up to different heights for different activities, so he can play with his sister, Isla, or he can be raised up to the height of the kitchen counter so he can knead dough with us when we make pizzas. It means he can take part in all family activities and we know he is safe.

"I hope to raise £500 for Newlife by running the Manchester Marathon, but I'd really like to double that if I can – If it wasn't for other people fundraising for Newlife then we wouldn't know the difference that this seat has made to Adam's life and to the lives of the rest of the family."

# CHALLENGE YOURSELF IN 2022



## Nightrider – Saturday 11th June

Cycle through the streets of London at night in this unique event. Join #TeamNewlife as you cycle past Tower Bridge, the London Eye and Buckingham Palace.

- Choose your distance – 50km or 100km
- Full event support throughout
- Enjoy your well-earned breakfast at the finish line!



## Skydive – April to October



Take on the challenge of a lifetime and experience an adrenaline rush you'll never forget as you freefall from over 10,000ft!

- Choose from one of 19 jump locations across the UK
- Full training given on the day
- Unlimited support from our dedicated Fundraising Team



Contact Fundraising to find out more on 01543 468 888 or email [fundraise@newlifecharity.co.uk](mailto:fundraise@newlifecharity.co.uk)

## CHANGING LIVES WITH CHILDREN IN NEED

We are delighted that this year, we have once again been chosen as a recipient of funding from BBC Children in Need.

One of the children who has received support recently is Addison, who has a rare disorder called Poretti-Boltshauser syndrome, which causes abnormalities in the brain affecting the function of her brain and speech.

Thanks to Children in Need, Newlife were able to provide Addison with a £1,346 specialist buggy, which keeps her supported and safe, and helps meet her sensory needs.

Addison's mum, Carli, said: "We are so grateful for the specialist buggy from Newlife and Children in Need.

"Addison is unsteady on her feet, can't walk long distances and tires easily. She also has challenging behaviour and has no road safety awareness or understanding of danger.

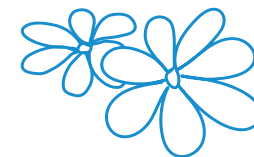
"It's given Addison so much independence and it's lovely that we can do things together and enjoy time as a family."

Newlife works in partnership with organisations to make sure that disabled children and families get the right help and support. Children in Need are helping us reach many more disabled children across the UK, ensuring they get specialist disability equipment to improve their lives.

Simon Antrobus, Chief Executive at BBC Children in Need said: "We are pleased to be able to partner with Newlife to change the lives of children and young people most in need. We know this support will benefit families and will help children and young people thrive and be the best they can be. Newlife have the expertise and knowledge to be able to reach children across the UK with equipment that will enable them to be brilliant."



## LADIES FASHION SHOW SUCCESS



We were thrilled to attend the Ladies Fashion Show at Hilton, Cobham on International Women's Day.

Our longstanding friend and supporter, Pam Ling, pulled out all the stops and arranged for guests to be entertained by a 75 strong Rock Choir, followed by a sumptuous lunch and then the main attraction, the Newlife fashion show! Pam organised 15 models who wore a selection of Newlife clothes and outfits from Marks & Spencer. Attendees had to guess which model wore Newlife and which wore M&S – out of 120 women only 1 guessed correctly!



Pam featured in the centre of her Newlife models

Pam has supported Newlife for over 12 years raising almost £40,000. Pam's support has enabled us to provide life changing equipment to disabled children. Thank you Pam for making such a difference.

## DATES FOR YOUR DIARY

1st to 31st May – May Marathon  
2nd June to 5th June – Royal Tea Party  
11th June – Nightrider, London  
27th June – Skydive Week  
June to August – Grand Draw  
14th August – Snowdon Sunrise  
11th September – Great North Run  
April to October – Wing Walk



To find out more about how you can get involved, visit our website [www.newlifecharity.co.uk](http://www.newlifecharity.co.uk)



# Royal Tea Party

2nd - 5th June 2022

Whether you're hosting a high tea, a picnic in the park or a street party, do your bit for Newlife this Jubilee and help us to raise vital funds for disabled children.

Bring your friends, family or work colleagues together and celebrate the Jubilee together. You might want to pick a theme for your party, add in a few games or just enjoy a nice brew.

Register today for your fundraising pack where you'll find tons of inspiration and resources to make your Jubilee celebration a success.

Email us today at [fundraise@newlifethecharity.co.uk](mailto:fundraise@newlifethecharity.co.uk)  
for your fundraising pack!

*Can't make the Jubilee weekend? Carry on celebrating and host your party at work, home or school anytime throughout June.*



Scan to find  
out more!



☎ 01543 468 888 ✉ [fundraise@newlifethecharity.co.uk](mailto:fundraise@newlifethecharity.co.uk) 📘 [newlifethecharity](https://www.newlifethecharity.co.uk) 📷 [newlifethecharity](https://www.newlifethecharity.co.uk)