


NEWLIFE

round up!

YOUR BI-ANNUAL UPDATE FROM
THE FUNDRAISING TEAM

AUTUMN | WINTER 2022/23



Read how
Poppy's dad
cycled through
the night for
Newlife!

Inside:

Read about our very own
daredevil Robin

Get fit with us and jog 1k a day
in October

See how a small gift can make
a big impact



WELCOME TO YOUR AUTUMN/ WINTER NEWLIFE ROUND UP

Hello and welcome to the Autumn/ Winter edition of Newlife Round up, our bi-annual fundraising newsletter bringing you our latest news, upcoming events and stories from our fantastic fundraisers.

Inside this edition, you can read about some of our amazing supporters who go above and beyond to support us including our very own Robin, who took to the skies on an adrenaline fueled Wing Walk raising almost £1,000! You'll also read about Poppy's dad, Paul, who cycled 100k through the streets of London at night.

We also highlight the impact your support makes to disabled children and their families. We care for some of the most vulnerable in our society, and we need your support now more than ever.

There are so many ways for you to get involved, so please follow us on social media to keep up to date with ways to get involved and future events:



Alternatively, you can call us on 01543 468 888 or email fundraise@newlifecharity.co.uk – we would love to hear from you!

Thank you for all your continued support and all that you do for Newlife; we couldn't make a difference to thousands of disabled children's lives without you.



Jo Duggan
Director of Fundraising &
Communications



THE CYCLE OF A LIFETIME!



Riding 100k through the historic streets of London through the middle of the night is certainly not an easy challenge to tackle, but Paul Kettleborough wanted to do something big to fundraise for Newlife to thank them for the equipment they had provided to his young daughter Poppy.



Poppy, aged 6

Poppy has Cerebral Palsy which affects all four limbs, as well as breathing difficulties and reflux. To carry on with everyday life the family needed a specialist car seat and comfort seats at home so she can sit comfortably and safely in the right position without pain, and she has also received loans of specialist toys through the charity's Play Therapy Pod Service.

When Paul separated from Poppy's mum, he needed a specialist sleep system at his new home in Lancashire so his daughter could come to stay with him for longer periods than just a few hours.

"The cost of the equipment is quite high" said Paul. "I wrote to Newlife about my

situation and got such a lovely reply. I made an application for the equipment Poppy needed. I was so touched that it was all sorted out so easily and with such support – and I thought I really have to do something to help raise funds for them!"

It was when he saw a post on Newlife's social media asking for people to fundraise on behalf of the charity in the Nightrider event that he knew he had found the right way to do it, and he persuaded his friend, Ash Greaves, to join him in his fundraising adventure for Newlife – which raised almost £900!

"It was a great event, and amazing to see some of the city's most iconic landmarks when everything was so quiet. One of the best things about raising money for Newlife is that I know every penny will go straight to help fund equipment for other children."



Paul with his friend Ash

If you'd like to take on a challenge in 2023, visit our website: www.newlifecharity.co.uk/newlife-events/

Celebrating a birthday or anniversary? Why not create a Facebook fundraiser!

SMALL GIFTS BIG IMPACT



Across the country many families will be facing financial hardship this winter. For the families supported by Newlife, they will also be facing additional and often unexpected costs that must be met somehow.



Ramneek, aged 6

Six-year-old Ramneek was born with the most severe type of Spinal Muscular Atrophy, a condition which causes her muscles to weaken and waste away over time. She is unable to sit up, walk, or do anything for herself without the support of an adult.

Ramneek was provided with a powered wheelchair by the NHS to give her independence for the first time to move by herself without relying on an adult.

Yet the wheelchair needed adaptations, the cost of which would have to be met by the family. Without these vital adjustments, Ramneek would not be able to use her wheelchair as her safety would be compromised. Her family turned to Newlife for help, who provided the crucial

£810 wheelchair accessories, granting her access to her life-changing equipment.

Thanks to Newlife supporters, Ramneek can use her powered wheelchair safely to gain that independence she desires, joining in play with friends, and her parents have peace of mind that she will be safe in her chair, and they can care for her more easily.

Ramneek's mum, Rajvinder, said: "These accessories have made it so much easier and safer for Ramneek to use her powered wheelchair. The seat lifting means that she can raise to the same height as everyone to be included in conversations and activities.

"Having the independence to move by herself means a lot to her."

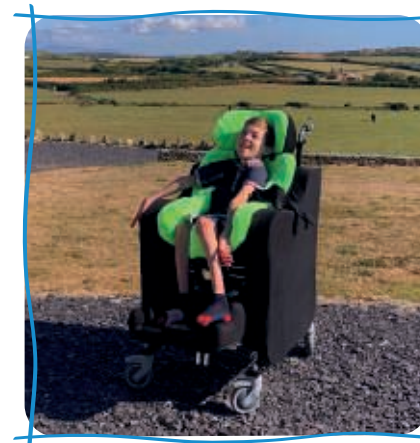
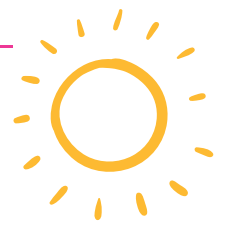
Could you help with a small regular gift?

When you commit to making a regular gift each month, you will be contributing within a community of other wonderful supporters who together change the lives of multiple families each year, making a big impact for children just like Ramneek. Whatever you can give will make a difference.



Make a regular gift today at
www.newlifecharity.org/donate
or scan the QR code.

SUMMER HOLIDAY FUN FOR AARON



Aaron enjoying his holiday in Anglesey

Having the right piece of specialist equipment has a huge impact on everyday life – which is something 18-year-old Aaron Wood and his family discovered when a new specialist seat from Newlife not only allowed him to relax in comfort but helped him gain more independence too.

Aaron, from Cheshire, has Cerebral Palsy which affects all his limbs and although he has good cognitive ability and awareness, he can't speak, so communicates using his eyes and symbols. He also needs to be repositioned regularly through the day, which can be hard on his parents Sarah and Lee, who meet his caring needs 24 hours a day.

Although Aaron has a comfort seat called a P Pod, the base was a beanbag style and he needed a chair with a more solid and secure base that could support him in

different positions and reduce the manual handling needed.

Thankfully, due to donations from Newlife supporters the charity was able to fund the £4,000 cost of the specialist seat which has a P Pod style top, specifically moulded to his shape, with a chair base beneath which is a solid and secure base on wheels that can be put into an upright or reclined position.

Now Aaron's posture is properly supported, and his position can easily be changed to keep him comfortable – and although it has a chest harness as part of the seat, the new specialist chair keeps him so supported he's been able to use the top part of his body independently for the first time and lift his own head up and look around!

Mum Sarah said: "The chair allows Aaron to be more involved in simple family times like sitting at the table for a meal, because of the comfort and good position it provides. He is now relaxed, comfortable and happy – that's all we ever wanted for him.

"We received the chair a few days before we went on holiday to Anglesey which meant he was able to sit outside and look at some lovely views.

"We just wanted to show the wonderful work of Newlife and how it's helped give us so much freedom."

"As an Occupational Therapist I have seen first-hand the help and support that Newlife offer to children and families who I work with. They provide an invaluable service funding pieces of equipment that enable children and their families to access the wider community, and enjoy day to day activities that may otherwise be impossible for them to participate in.

Over the years children and families that I have worked with have used Newlife to access pieces of equipment such as adapted trikes, sensory equipment for their child's room and specialist car seats when their child has complex postural needs. Families have also been able to use the emergency equipment loan scheme which has been incredibly helpful in times of crisis.

Thank you Newlife for all the amazing work you do."

Claire Taylor
Senior Occupational Therapist,
Aneurin Bevan University Health Board.



SUPPORTING DISABLED CHILDREN – ONE SHOPPING TRIP AT A TIME

As well as taking part in a range of fundraising events from craft making to running marathons, another way to help raise funds for Newlife is through . . . shopping!



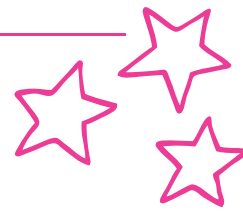
Newlife now has ten stores across the UK and the latest in High Wycombe, Buckinghamshire, is the biggest store yet at 15,000 square foot.

All stores help to raise vital funds for its charity services by selling brand new surplus stock donated from leading retailers and manufacturers, which would otherwise be destined for landfill.

Find your nearest store
www.newlifestores.co.uk



FLYING HIGH TO FUNDRAISE



Newlife's own Robin Barron took to the skies in July to do an amazing wing walk – all to help the disabled and terminally ill children that turn to the charity for the specialist equipment they urgently need.



Robin ready for his wing walk

Robin, has worked as a Sales Assistant at the Newlife Plus store based in Cannock for 7 years and knows how important it is for disabled children to have the right equipment to keep them safe, free from harm and to have the opportunities they need for freedom and independence. Determined to help, he signed up for a wing walk with all fundraising from the event going to Newlife.

"I wanted to do something that was a real challenge and doing a wing walk meant I was the first person to do that for Newlife," said Robin.

"It was an amazing experience and can't believe I have done it – but I would do it again in a heartbeat. In fact, now I have a certificate for doing this, it means I can do it again but next time with a loop the loop. But that might have to wait until next year!"

So far, Robin has raised over £1,000 from his epic adventure!

"If anyone is thinking about fundraising for Newlife I would definitely tell them to go for it, it's an amazing thing to know that you are changing the life of a child."

Sally Insley, Newlife's Head of Public Fundraising, said: "I'm so proud of Robin. He really has gone the extra mile in doing this wing walk to raise funds for Newlife. He knows how hard Newlife strives to make life better for disabled and terminally ill children and his fundraising means he is transforming lives."

If you would like to take on an adrenaline fuelled challenge like Robin, please get in touch. We have opportunities all across the UK from scintillating skydives to epic mountain climbs.



Scan here

**Secure your wing walk for 2023 by
calling the Fundraising Team on
01543 462 777**

CHALLENGE YOURSELF IN 2023

Scan to take part!



Are you looking for the ultimate adrenaline rush? Register your place today and take on one of these incredible experiences in 2023:

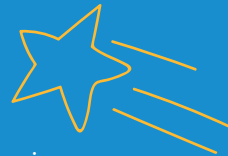
Skydive: April - October

Take on the challenge of a lifetime and experience an adrenaline rush you'll never forget as you freefall from over 10,000ft!



WingWalk: April - October

Be the ultimate daredevil as you reach speeds of up to 130mph whilst strapped to the top of a bi-plane.



Guided Walks

We have partnered up with Sky Blue Adventures to host TWO amazing opportunities. Bring your family, friends, or colleagues together and take on a trek for Newlife:

Snowdon Sunrise: Sunday 18th June

Climb to the top of one of the UK's tallest mountains and ake in the majestic views as you watch the sun rise in the distance. 10,000ft!



Malvern End to End Walk: Sunday 14th May

Take on one of the best hiking trails across the Malvern Hills and enjoy the astounding views across Worcestershire, Herefordshire and over the Cotswolds.



To find out more visit newlifecharity.co.uk/newlife-events/ or contact the fundraising team on 01543 462 777

CORPORATE VOLUNTEERING OPPORTUNITIES

Did you know we offer Corporate Volunteering with Newlife?

Corporate Volunteering is a fantastic way for your staff and colleagues to give back to your community and help make a difference with Newlife.

Paul Maplesden, Corporate Fundraiser, recently hosted an event with M&S Bank: "It was great to have colleagues from M&S Bank volunteering their time recently to support the work we do to raise valuable funds to help disabled children and their families – thank you to all involved on what was a fantastic day."



If you're looking to volunteer with a local charity, enhance your CSR credentials or pull together a team building day – get in touch with fundraise@newlifecharity.co.uk

PARTNERSHIP AWARDS BOOST!

Newlife were selected to be the Charity Partner at the 2022 Partnership Awards ceremony. The awards celebrate the infrastructure and energy industries most successful partnerships. We would like to say a huge thank you to all of the attendees for raising over £4,000 on the night!



Paul Maplesden, Corporate Fundraiser with John Bailey, Community Champion

Thank you to Tesco, Bishop Auckland for their kind donation of £1,500.



Friday 3rd March

Sparkle Day

Coming Soon!

Unleash your **inner sparkle in March 2023** and raise vital funds for Newlife, enabling us to support more disabled and terminally ill children across the UK.

Whether you're at school, work, or home, join in the fun.

How to get involved:

- ★ Host a sparkle themed dress down day at school.
- ★ Hold a sparkly coffee morning for your friends or colleagues.
- ★ Organise a sponsored sparkle walk, jog or run.

How can I get involved?

Be the first to get your fundraising pack by scanning the QR code below, or visit newlife.support/SparkleDay

For more information
email fundraise@newlifecharity.co.uk
or call **01543 462 777**



SNOWDON SUNRISE



Huge thanks to the team at Fairhurst Buckley for taking on the Snowdon Sunrise challenge this August, raising over £1,000!

Setting off at 2am from Llanberis, our 5 strong team of intrepid explorers made it to the summit in time to see the majestic sunrise, one of the best the trek leaders had seen this year.

Mark Wilkinson, Agency Surveyor said: "None of the team fully knew what they were letting themselves in for, but we were determined to make it to the summit in time. We're all so glad to have taken this trek on to raise funds for Newlife and the children they support."

Feeling inspired? Joins us on Sunday 18th June 2023 as #TeamNewlife return to Snowdon.

Visit newlifecharity.co.uk/events/snowdon-sunrise-challenge to secure your place.

JOIN US ON OUR VIRTUAL ROADSHOW

Are you interested in hearing more about Newlife and the services we offer to our children and families?

Would you like to speak directly with our Fundraising Team and learn more about the ways that you can get involved?

Join us as we host two online sessions where you will have the opportunity to meet representatives from our child & family and fundraising team as well as a family who will share their story.

We will be hosting two one hour sessions:
Tuesday 4th October at 10.00am
Wednesday 12th October at 7.00pm






To secure your place please call the Supporter Care team on 01543 462 777 or email fundraise@newlifecharity.co.uk

JOG 1K A DAY IN OCTOBER

Join our virtual fundraising challenge today!

Get active this Autumn and help us to ensure that more children receive the life changing, specialist equipment they need.

You will get:

-  Access to our private Facebook community
-  Challenge event tracker to record your progress
-  Free t-shirt when you raise £25!

Not on Facebook or would like to find out more?

Email fundraise@newlifecharity.co.uk or call
01543 462777



SCAN ME OR VISIT
www.newlife.support/Jog1KADay