



The Newlife Story

A guide to who we are, what we do and the difference we can make together.



The Charity for Disabled Children

Impacting disabled children and their families

- There are **1.6m** children in the UK living with a disability.
- We estimate that more than **700,000** disabled children are living without the equipment they need.
- It costs **3x** more to raise a disabled child.
- In the current economic climate **9 out of 10** families with disabled children are struggling financially.
- Through our research and by talking to families through our **Family Champions Board** we focus on what makes the biggest difference to disabled children and their families.
- **Only 2 in 5** families feel their child has all the specialist equipment they need.
- **75%** of health professionals are concerned by the level of unmet equipment needs in their area.
- Our ambition over the next five years is to increase impact by addressing these needs.

Our vision:

A society where all disabled children have the opportunity to achieve their full potential.

Our mission:

Together we will make life better for disabled and terminally ill children and their families

"There is a major lack of funding for children with additional needs. We rely on charities for equipment when this should be provided by the local council."

Parent Surveyed

"Disabled children have never been more vulnerable than they are now. If they truly were a government priority, then I wouldn't witness simple failures so often."

Occupational Therapist



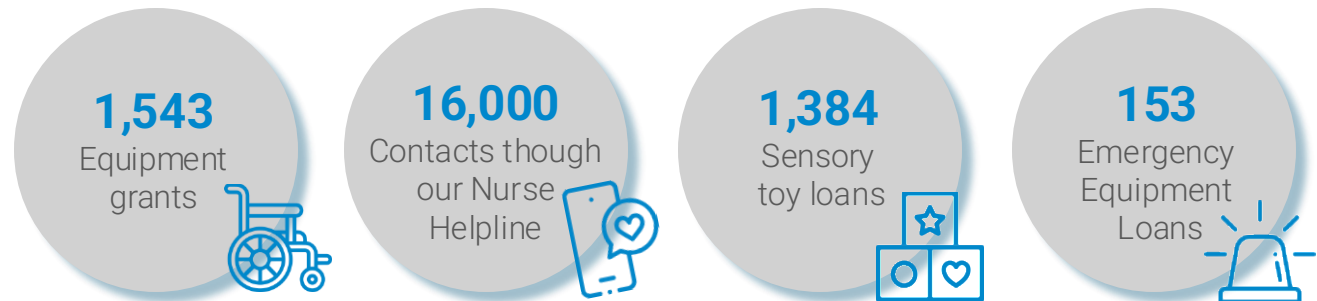
Changing the lives of disabled children

For more than 30 years, Newlife Charity has been here to make sure disabled and terminally ill children get the chance to thrive.

We provide life-changing solutions including:

- **Specialist equipment** such as beds, buggies, car seats, wheelchairs, customised to meet the unique requirements of each disabled child.
- **Emergency equipment loans** to disabled children who have reached crisis point and urgently need help.
- **A sensory toy loan service** to help children interact with the world around them, communicate and stimulate their development through the power of play.
- **Our Nurse Helpline** which offers essential support to families in need, providing vital information, signposting to key services – or just having someone to listen.
- **Supporting adults with additional needs** with volunteering and employment opportunities, providing a means for career development.
- **Advocacy and campaigning** giving disabled children and their families a voice by working with decision makers and partner charities to campaign for change and better services.

With income from our fundraising and commercial activities, in 2024 we delivered:



How Newlife helps: Summer's story

Summer has a genetic condition so rare that the seven-year-old is the only person in the UK to have it, leaving her abnormally tall for her age and unable to walk or communicate.

A buggy or wheelchair is vital for Summer to leave her home with mum Larissa, but despite being referred to their local wheelchair services in September 2022, they still haven't been provided with a suitable wheelchair.

So Larissa turned to Newlife, which provided her with a buggy to meet her special needs through their Emergency Equipment Loan service. Emergency loans are usually for six months, but Summer's loan has now been extended twice.

Larissa said: "Having a wheelchair is the biggest thing for us, so I don't know what we would have done without Newlife helping us. Without this buggy Summer couldn't go to school, medical appointments or leave the house for anything."



Growing demand for our services and support

Although our provision increased by 38% last year, demand for our services continues to grow.

- To continue providing this support we rely on donations of stock from our retail partners.
- Each item donated to us and diverted from landfill is a step towards a more sustainable future.
- More importantly, the sale of each item enables us to support more and more disabled children and their families.

622

tonnes of items sold by Newlife in 23/24

6,428

tonnes of carbon saved in 23/24

"By repurposing and reusing these garments through Newlife, we're not only reducing waste but also making a huge difference to the lives of those who need it most. Every piece of clothing diverted from landfill stands as a step toward a more sustainable future, and more importantly, it symbolises hope and support for children and families facing immense challenges. Together, we can create a world where every child has the opportunity to thrive, regardless of the challenges they face."

Skopes Menswear



Working together

The generosity and support of our retail partners enables Newlife to fund our mission, providing disabled kids and their families with the specialist solutions they need to thrive.

Stock

All donated stock is **processed** and **retailed** by our staff and volunteers. Unsold stock is recycled/upcycled by trusted partners.

Data

By providing your product data, we can **maximise sales value**. This data also helps us to provide more accurate **ESG reporting and shopper insights**.

Brand

By leveraging your brand in our messaging, we can **maximise stock value**. There are also many **joint marketing** opportunities.

Content

Product content will enable **accurate descriptions and imagery** on our digital channels, as well as maximising the stock value.



Environmental and Social impact

Newlife's impact and ESG reports help retail partners towards meeting many of your ESG compliance and reporting obligations including EPR, Waste Reduction Reporting, CSRD, CSDDD and ESR.

Environmental impact



Environmental impact

- Extending the lifespan of items by another owner.
- Preventing thousands of tonnes of new product going to landfill.
- Supporting partners in delivering their ESG commitments by providing tailored impact and ESG reports.
- Ensuring all unsold stock is recycled/upcycled responsibly.

Social impact

- Access to clothing, homeware and school uniforms for low income families that shop in our stores and online.
- Volunteering opportunities for adults with special needs.
- A Disability Confident employer offering employment opportunities to adults with disabilities and additional needs.

Social impact



Value Newlife can add compared to other options for your stock

Each donated garment gives us **at least £4 of value**, compared to pence from recyclers

ESG Reporting

We can provide you with the ESG data needed to meet **your reporting requirements**

Social Value

We will share **impact data** your stock has had on disabled children and their families

Free Transport

We **pick up** in your stores or distribution centres at our cost

Returns QC

We provide a **Quality Control** service and **insight** into returns and faulty stock

Tax Relief

All **stock donated** is eligible for **tax relief**

Insights

Using shopping data, we provide customer insights focused on **buyers** of your products

Other ways for you to get involved

Many of our retail partners don't want their relationship with Newlife to end with the donation of unwanted stock.

- **Fundraising** - host a fundraiser or join one of our exciting challenge events and get your whole team involved.
- **Volunteering** - we have a comprehensive corporate volunteering programme and can offer volunteering opportunities at our head office, in our stores or at your premises.

“Our experience of working with Newlife has been incredibly rewarding! The team are very welcoming and have been a real pleasure to work with. The volunteering opportunities are creative, unique and have certainly engaged our workforce. I've also found them very helpful post-event, where we have been provided data and case studies to assist us with our social impact targets. I'd strongly recommend organisations engage with Newlife for their volunteering programme.” **Paragon Bank**

“My management team and I have been wanting to do something for charity that we could do all together. Giving to Newlife was important to us because it ties in with work and the support River Island already give.”
River Island staff, Westfield



Play a part in the change

Join the growing number of retail partners that are supporting disabled children and their families while taking a step closer to a more sustainable future.

RiverIsland

NEW LOOK

WHITE STUFF

M&S

George.

SUPERDRY®

MINT VELVET

next

amazon

WHISTLES

MATALAN

HOBBS
LONDON

PRIMARK®

REGATTA 
GREAT OUTDOORS®

THE WHITE COMPANY
LONDON

Tu

Phase Eight

BODEN

PEACOCKS

 MOUNTAIN
WAREHOUSE

Thank you, your support will help
change disabled children's lives

