

# Round-Up Magazine

Your Fundraising Update





# Friday 7<sup>th</sup> March 2025

## Whether you bake, dress up or walk, whatever you do, make it sparkle!

By fundraising with us this Sparkle Day, you will be helping to brighten the lives of disabled children. Help us ensure no child goes without the specialist equipment they need.

Get your free fundraising pack and get inspired at  
[newlifecharity.co.uk/sparkleday](https://newlifecharity.co.uk/sparkleday)

P.S. Can't do 7th March? Pick any date of your choice!

 **newlife**  
The Charity for Disabled Children

## Welcome to the Autumn/Winter edition of Your Fundraising Update

Welcome to our latest edition of Round-Up Magazine, dedicated to spotlighting the fantastic work and vital support by our incredible community of fundraisers, volunteers, and corporate partners.

Inside this edition, we bring you inspiring stories of both fabulous fundraising feats and the life-changing impact your efforts have on the many families we help. From our challenge participants to our wonderful corporate partners, who give so much time to support Newlife in so many ways, we are truly grateful to every one of you.



Every penny raised goes directly towards making a real and lasting difference to the lives of so many children across the UK - children just like one-year-old Esmie, whose story is on page 5, and Girlguide Ellie who, having been helped by Newlife as a 12-year-old, is now spearheading a brand new partnership between Newlife and Girlguiding. Ellie's story highlights how Newlife makes a lasting difference to the lives of disabled children.

Remember, we are here to support any fundraising ideas you have, so please get in touch! You can also visit the website [newlifecharity.co.uk](https://newlifecharity.co.uk) for further inspiration. Alternatively, contact the team on **01543 468 888** or email [fundraise@newlifecharity.co.uk](mailto:fundraise@newlifecharity.co.uk) – we would love to hear from you!

**Thank you for all your continued support and all that you do for Newlife; we couldn't make a difference to thousands of disabled children's lives without you.**

*Jo Duggan*

Joanna Duggan  
Director of Fundraising

To keep up to date with our latest events and updates follow us on social media:



[newlifethecharity](https://www.facebook.com/newlifethecharity)



[newlifethecharity](https://www.instagram.com/newlifethecharity)



[newlifecharity](https://www.linkedin.com/company/newlifecharity)



[newlifecharity](https://twitter.com/newlifecharity)

# The impact you make

From January - June 2024 your support has provided:



**£1,722,475**

worth of  
equipment grants



**51**

emergency  
equipment loans



**752**

loans of specialist  
sensory toys



**10,448**

instances of support  
through our free  
Nurse Helpline

Our **Fight For Our  
Future** campaign  
petition achieve  
more than

**3,600**

signatures



**979**

equipment grants

## Esmie's Story

**One-year-old Esmie was diagnosed with a brain tumour at just two months old.** But after enduring five major surgeries to remove as much of the tumour as possible and spending the first six months of her life in hospital, she is now waiting for an assessment to see if she is eligible for a specialist buggy – six months after being referred. This has left her and her family struggling to attend hospital appointments - until Newlife stepped in.

Doctors were unable to remove all of Esmie's tumour, so her future is uncertain. She is unable to sit up on her own, is still struggling to develop head control and the left side of her body is particularly weak, making a high street buggy completely unsuitable for her.

**"Without Newlife we'd be stuck. We would really struggle to get out of the house, but now we can easily go to her regular hospital check-ups and she can sit in this loan buggy if we go for a family meal"**

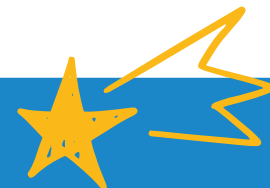


Esmie urgently needed a specialist buggy that could support her safely and comfortably and prevent her condition further deteriorating, which would allow the family to leave the house to go to regular hospital appointments and into the local community.

But as they have no idea how long they will be waiting for an assessment date, her mum Sophie turned to Newlife for a specialist buggy through our Emergency Equipment Loan service.

**"Initially, advice we were given was just to prop her up, but that would just lead to further medical issues for her. The buggy from Newlife has extra chest straps which support her and ensure she doesn't develop a curve in her spine."**

**Every penny raised goes to helping children like Esmie!**





# #TeamNewlife

## Making a difference

Our army of amazing supporters continue to go above and beyond to help raise vital funds to help Newlife support more disabled and terminally ill children across the UK.

### Golfers take on ambitious challenge

**Golfers Tim and Neil from Leamington and County Golf Club embarked on an ambitious feat: The Longest Day Golf Event, which saw them playing for 24 hours and completing an incredible 108 holes while raising an impressive £3,658!**

Tim, motivated by his experience in the mobility industry, understands the struggles families face. "Being captain of the golf club provides a great

opportunity to help others, and I thought raising funds for Newlife would be a great way to help as many disabled children as possible. I've been working in the mobility industry for many years, so I know how difficult it can be for families to get the equipment they need, and that there are many children out there in need of equipment."



### An epic trek

**A team of intrepid Newlife explorers recently took on the challenging Malvern End-to-End trek to raise much-needed funds to support disabled and terminally ill children across the UK.**

With the considerable altitude ascended, this demanding walk visited every summit across the Malvern Ridge on the outward journey and by-passing all but Worcestershire Beacon on the return leg. Supporters were joined by several Newlife staff members, including our Director of Fundraising, Communications and Volunteering, Jo Duggan, as well as Lucy Beardmore and Lucy Rice from our Fundraising team.

The trekkers' incredible efforts saw an impressive £2,447 and counting raised for Newlife - well done to all involved!



### More ways to support

**There are so many ways to get involved and support Newlife - just visit our website for a whole host of ideas and resources to help you make the most of your fundraising experience!**

From bake sales to sweepstakes, raffles to challenge events and everything in between, our Fundraising Team can support you, however you decide to raise funds!

Got a birthday coming up, but want to use your gifts for good? Why not make this birthday special, and celebrate it with us? Give up the gift cards and instead ask your friends and family to chip in and raise money for Newlife.

Your gift will make a lasting impact on the lives of disabled children across the UK.

Find out more about the different ways you can start your fundraising journey and get involved at [newlifecharity.co.uk/how-to-get-involved](https://newlifecharity.co.uk/how-to-get-involved)



Scan to find out more



# A sparkling partnership with Girlguiding

An exciting partnership between Newlife and Girlguiding Midlands launches on September 1, which will see around 3,000 Guides, Brownies and Rainbows completing a special Sparkle Challenge badge in aid of Newlife. One of the Girlguiding core values is to be fully inclusive to all women and girls, including those with disabilities, allowing them to embrace everything the organisation has to offer.

## Ellie's story

Eleanor Upton was 12 years old when she received a powered wheelchair from Newlife, a piece of equipment which opened up a whole new world of adventure for her – and helped her embrace all that the fully inclusive Girlguiding programme has to offer over the years. Progressing from Brownies at age nine, through to Rangers, Ellie eventually became a leader of 2nd Great Wyrley Guide Unit - which is the same one she attended as a child.

Now aged 23, Ellie has only just stopped using the powered wheelchair from Newlife, gifting it to help a person with cerebral palsy. This is the same condition that led Ellie's family to turn to Newlife for the much-needed piece of equipment in 2012, with the aim of giving her more independence from her

carers, access to different places and to open up more opportunities for her.

"I was grateful for my NHS wheelchair, but it wasn't really suitable for outdoors, so the all-terrain powered wheelchair from Newlife was a game-changer for me



at the time," says Ellie.

"It meant I could do lots more and be involved in more things, including going away from home for the first time to Girlguiding camp. I remember it was festival-themed which was just wonderful for a 12-year-old.

**"Before the wheelchair from Newlife I was very restricted in what I could do, not everything was accessible. But I have to give my thanks to Girlguiding; my district was great, and they never let my disability get in the way of anything. I'm a leader now because I wanted to give something back."**

The powered wheelchair also helped Ellie after she had a multi-level surgery on her knees, feet and hips in 2014. The surgery helped improve Ellie's quality of life but had a long recovery time.

"The wheelchair helped me a lot as it took time for me to build my stamina back up, but because of it I was able to continue to go out and socialise, she says. "I'm so grateful I was able to have the wheelchair from Newlife. I was grateful for the one from the NHS, but this one was on a different level."



Ellie with her powered wheelchair provided by Newlife aged 12

**"Disability equipment can be so very expensive and the wheelchair from Newlife opened up so many avenues for me – it made me who I am today!"**





# Take on a challenge in 2025

Make a splash with an epic swimming feat, reach new heights on a mountainous trek or put your best foot forward with a marathon run - all in the name of raising vital funds for a fantastic cause.



## Skydive for Newlife: Various dates and locations

Have you ever dreamt of soaring through the clouds, experiencing the rush of freefall, and seeing the world from a breathtaking new perspective? Now you can make that dream a reality while making a life-changing impact for disabled and terminally ill children.

Newlife, in partnership with Skyline Skydiving, invites you to participate in a thrilling charity skydive! This unforgettable adventure offers the chance to:

**Freefall from 10,000 feet** Feel the adrenaline surge as you reach speeds of up to 125mph during an exhilarating tandem jump with a professional instructor.

**Cross skydiving off your bucket list** Conquer your fears and create a memory that will last a lifetime.

**Change a child's life** Your fundraising efforts through the skydive will directly support Newlife in providing essential equipment and support to families with disabled children.



Check out a selection of our 2025 events here, or visit [newlifecharity.co.uk/newlife-events](https://newlifecharity.co.uk/newlife-events) for more!

## Ride London 25: Sunday 25th May

**Calling all cycling enthusiasts!** This is a unique opportunity to pedal past impressive London landmarks and through picturesque rural Essex – all on traffic-free roads. RideLondon is one of the world's greatest festivals of cycling, and you could be a part of the story, all while raising vital funds for Newlife! From the exhilarating start in central London at Victoria Embankment to the mighty finale at Tower Bridge, this is one two-wheeled experience not to be missed!



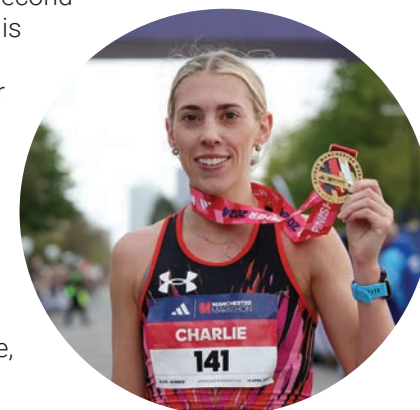
## 30 for 30: Starting in January

**Thirty days, 30 minutes of activity a day** – the perfect way to kickstart your New Year fitness goals and raise vital funds for Newlife along the way with our brand new virtual challenge! Join our '30 for 30' challenge at any time throughout January and get active – your way! Walk, run and swim, or dance, hula-hoop and roller skate your way to 30 minutes of activity – the choice is yours. Just keep it up for 30 days and you'll be on your way to making a difference to the lives of disabled children across the UK.

## Manchester Marathon 2025: Sunday 27th April

**The adidas Manchester Marathon**, the UK's second largest marathon and one of Europe's largest, is an iconic event drawing participants from all over the world to the vibrant streets of Greater Manchester. Many regular runners find this the ideal event to get a personal best time, whilst everybody finds the incredible Mancunian support throughout the course unforgettable.

Don't miss out! 2024 saw a record-breaking 32,000 people sign up to take on the challenge, after final entries sold out months before, and 2025 is set to be the biggest year yet!



# A successful partnership with M6toll

**M6toll is continuing its fantastic support of Newlife by once again sponsoring The Cannock Chase Running Festival, being held in October 13.**

As well as sponsoring the running festival held earlier this year, which was a huge amount of fun for everyone taking part, M6toll also made a generous £1,500 donation to Newlife's Christmas Appeal in 2022, sponsoring Play Therapy Pods so even more disabled children could enjoy the gift of play.



Craig Stewart, Newlife's Head of Corporate and Community Partnerships, said: "M6toll have been fantastic supporters of Newlife for a number of years now. From volunteering at our Opportunities Centre, supporting our Christmas appeal by funding 3 Play Therapy Pods, right the way to being our primary sponsor for the Cannock Running Festival 2024. For Newlife, it is important that we develop relationships with organisations in our region and M6toll staff have certainly shown their support for a local charity."



Jo Seabright, M6toll's Customer Experience, Marketing and Communications Director, added: "We are thrilled to continue supporting Newlife. This local charity reflects our dedication to the community. Once again, we're proud to sponsor the running festival, which promises to be a real family event for local residents. Many of our colleagues will be present, either running the event or assisting on the day. As part of our partnership, we're offering all runners a free return trip on the M6toll, making their journey to and from the event a 'breeze'!" For more information, visit [m6toll.co.uk/breeze](https://m6toll.co.uk/breeze).

**Find out more about the October Cannock Chase Running Festival and how you can take part, visit [cannock-chase-running-festival.newlifecharity.co.uk](https://cannock-chase-running-festival.newlifecharity.co.uk)**

## Get your workplace involved!

If you are looking to support a charity through your workplace, there are so many ways to get involved and help Newlife to further our mission to provide specialist equipment to disabled and terminally ill children across the UK! Here are just some of the ways that you and your colleagues can support Newlife:



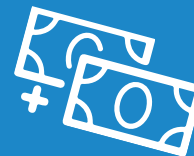
### Charity of the Year

**Does your workplace support a nominated charity with fundraising each year?** If so, we'd love to be nominated! We are incredibly grateful to have been nominated as Charity of the Year for businesses and organisations including Platform Housing Group, Paragon Bank and more recently, and these partnerships are vital in helping us to secure much-needed funds to support our work.



### Workplace Fundraising

**Raising funds through your workplace, team or office is a great way to bring people together, provide team building opportunities and have an awesome time in the process!** It doesn't have to be complicated you could organise a sweepstake, a bake sale or you could sign up for a team challenge. Whatever you decide to do, you will get lots of support from our fundraising team here at Newlife!



### Matched funding

**If your workplace offers matched funding, you can double the difference you make!** Many businesses and organisations will pledge to match the fundraising their staff achieve, pound for pound, which makes a huge difference to the charities you support!

# Gifts in Wills

**Gifts in Wills left by our kind supporters are changing the lives of disabled children and families. Thanks to the generous gifts of Irene, Olive and others Newlife has been able to provide vital equipment and support to children in need.**



## Irene's Story

**Irene always wanted to support others and during her life gave her time to help a friend who had a disabled daughter.** It was this experience that influenced Irene's decision to leave a gift in her will to Newlife.

Her friend and neighbour Mervyn recalls: "Irene always used to say that you cannot live your life on "Ifs" – If only this or that. That is how she lived herself – making the best of what she had, or could do, and being there for others as well. The gifts Irene made in her Will are continuing her focus on helping others, supporting causes close to her heart. I'm delighted that Newlife will be able to benefit."

Irene's kindness is helping provide children with specialist equipment like wheelchairs and buggies that will increase their independence and empower them to enjoy days out and live life to the full.



## Olive's Story

**Olive lived in Wales and sadly died last year aged 86. She was disabled from birth, and as a young girl she couldn't move around easily as she didn't have a wheelchair.** Olive really understood the importance of having the right equipment and being independent, and wanted to leave a gift to Newlife in her Will so that others could enjoy a better future.



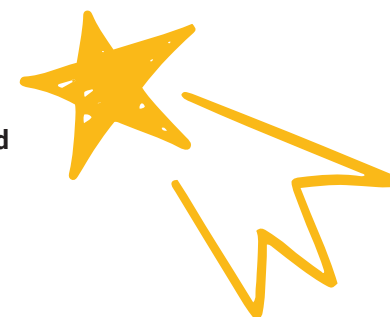
Teresa, Olive's aunt told us: "Olive liked everyone to be happy. She was a thoughtful lady and wanted her money to help others. As a family we have also benefited from Newlife, as Olive's great-grandnephew Oscar received a car seat recently. It's wonderful that Olive's legacy will help other children get the equipment they really need."

## Lynn's Story

**Lynn, one of our supporters, decided to include Newlife in her Will earlier this year.** She told us: "It's so important to write a Will and many people don't realise that their family might not benefit if they don't have one. I'd been meaning to update my Will for a few years and the information from Newlife was really helpful and encouraged me to speak to my solicitor. I chose to include Newlife as I want to help make life better for children. I have seen first-hand how the charity works from my time as a volunteer and I really trust Newlife."

**"I'm excited that my legacy will bring new opportunities and better futures for disabled children and their families."**

Kam Dulai from our Child and Family team added: **"These wonderful donations will have a profound impact on the lives of many children with disabilities. With pressure on statutory services and the increasing cost of living, families are relying on us more than ever before. We're so thankful for people who chose to include ewlife in their Will, so that disabled children can enjoy a brighter future."**



## Leaving a Legacy



**If you'd like to find out more about making a Will and how you could make a difference to disabled children, do get in touch on [fundraise@newlifecharity.co.uk](mailto:fundraise@newlifecharity.co.uk).** Newlife offers a free online Will for supporters, and we've also produced a handy new guide to help answer questions and explain how you can make an impact. See our website for more information: [newlifecharity.co.uk/a-gift-in-your-will](http://newlifecharity.co.uk/a-gift-in-your-will)



**FIRST 50  
RUNNERS  
SIGN UP  
FOR FREE!**

# RUN DRAYTON MANOR 2025

## 5K & 10K RUN

**6TH  
APRIL  
2025**

### At Drayton Manor Resort

**Join #Team Newlife and help  
raise vital funds to change  
the lives of disabled children**

**Free entry to Drayton Manor all day!**

### Sign up today!

[drayton-manor.newlifecharity.co.uk](https://drayton-manor.newlifecharity.co.uk)



Registered with  
**FUNDRAISING  
REGULATOR**

Newlife the Charity for Disabled Children.  
Registered number 1170125 in England & Wales.

